



#### MATERIALS

Caron® Simply Soft® (6 oz/170.1 g; 315 yds/288 m)

Gold (39782)                    **1**                    **ball**

Set of four sizes U.S. 7 (4.5 mm) and U.S. 8 (5 mm) double-pointed knitting needles.  
Size U.S. 7 (4.5 mm) circular knitting needle 16" (40.5 cm) long **or size needed to obtain gauge.** Cable needle. Stitch marker.

#### ABBREVIATIONS: [www.yarnspirations.com/abbreviations](http://www.yarnspirations.com/abbreviations)

**Alt** = Alternate

**Approx** = Approximately

**Beg** = Beginning

**C3(5)B** = Slip next 1 (2) stitches onto cable needle and leave at back of work. K2 (3), then K1 (2) from cable needle.

**C3(5)F** = Slip next 2 (3) stitches onto cable needle and leave at front of work. K1 (2), then K2 (3) from cable needle.

**C4(6)B** = Slip next 2 (3) stitches onto cable needle and leave at back of work. K2 (3), then K2 (3) from cable needle.

**C4(6)F** = Slip next 2 (3) stitches onto cable needle and leave at front of work. K2 (3), then K2 (3) from

cable needle.

**Cont** = Continue(ity)

**K** = Knit

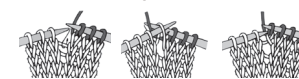
**K1below** = Knit into next stitch 1 row below, at same time slipping off stitch above



**K1tbl** = Knit next stitch through back of loop

**K2tog** = Knit next 2 stitches together

**M1** = Make 1 stitch by picking up horizontal loop lying before next stitch and knitting into back of loop.



**Pat** = Pattern

**P** = Purl

**Psso** = Pass slipped stitch over

**Rem** = Remain(ing)

**Rep** = Repeat

**Rnd(s)** = Round(s)

**Sl1** = Slip next stitch knitwise

**Ssk** = Slip next 2 stitches knitwise one at a time.

Pass them back onto left-hand needle, then knit through back loops together

**St(s)** = Stitch(es)



INTERMEDIATE

#### SIZE

One size to fit average Woman.

#### GAUGE

18 sts and 24 rows = 4" [10 cm] in stocking st.

#### INSTRUCTIONS

With smaller set of double-pointed needles, cast on 88 sts. Divide sts onto 3

needles and join in rnd, placing marker on first st.

**1st rnd:** \*K1tbl. P1. Rep from \* around. Rep last rnd Twisted Rib for 2" [5 cm].

Change to larger circular needle.

**Next rnd:** \*K2. M1. K2. Rep from \* around. 110 sts.

**Next rnd:** \*K28. M1. K27. M1. Rep from \* around. 114 sts.



Proceed in Shaker Cable Pat as follows:  
(See Chart I).

**1st rnd:** \*(P1. K1) 3 times. P1. K12. Rep from \* around.

**2nd and alt rnds:** \*(P1. K1below) 3 times. P1. K12. Rep from \* around.

**3rd and 5th rnds:** As 1st rnd.

**7th rnd:** \*(P1. K1) 3 times. P1. C6B. C6F. Rep from \* around.

**8th rnd:** \*(P1. K1below) 3 times. P1. K12. Rep from \* around.

These 8 rnds form Shaker Cable Pat.

Cont in pat until work from beg measures approx 8" [20.5 cm], ending on an 8th row of pat.

**Note:** Change to larger set of double-pointed needles where appropriate.  
(See Chart II).

**Shape top: 1st rnd:** \*(P1. K1) 3 times. P1. ssk. K8. K2tog. Rep from \* around. 102 sts.

**2nd rnd:** \*(P1. K1below) 3 times. P1. K10. Rep from \* around.

**3rd rnd:** \*P1. Sl1. K2tog. pssso. P1. K1. P1. K10. Rep from \* around. 90 sts.

**4th rnd:** \*(P1. K1below) twice. P1. K10. Rep from \* around.

**5th rnd:** \*(P1. K1) twice. P1. C5B. C5F. Rep from \* around.

**6th rnd:** \*(P1. K1below) twice. P1. ssk. K6. K2tog. Rep from \* around. 78 sts.

**7th rnd:** \*(P1. K1) twice. P1. K8. Rep from \* around.

**8th rnd:** \*(P1. K1below) twice. P1. K8. Rep from \* around.

**9th rnd:** \*P1. Sl1. K2tog. pssso. P1. K8. Rep from \* around. 66 sts.

**10th rnd:** \*P1. K1below. P1. C4B. C4F. Rep from \* around.

**11th rnd:** \*P1. K1. P1. K8. Rep from \* around.

**12th rnd:** \*P1. K1below. P1. ssk. K4. K2tog. Rep from \* around. 54 sts.

**13th rnd:** \*P1. K1. P1. K6. Rep from \* around.

**14th rnd:** \*P1. K1below. P1. C3B. C3F. Rep from \* around.

**15th rnd:** \*Sl 1. K2tog. pssso. ssk. K6. Rep from \* around. 42 sts.

**16th rnd:** \*P1. ssk. K2. K2tog. Rep from \* around. 30 sts.

**17th rnd:** \*K2tog. Rep from \* around. 15 sts.

Break yarn, leaving a long end. Draw end tightly through rem sts and fasten securely.

### Key

- = Knit
- = K1below
- = Purl
- = ssk
- = K2tog

= C3B

= C3F

= C4B

= C4F

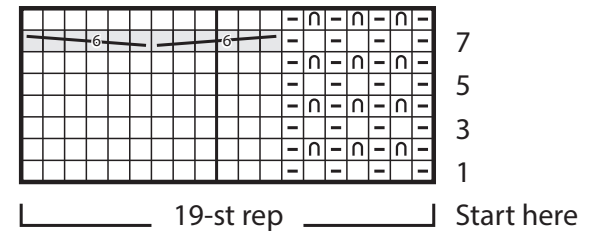
= C5B

= C5F

= C6B

= C6F

### Chart I



### Chart II

